

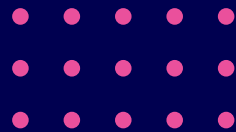
Did you hear the news?


Announced in the CMS 2022 Final Rule, outpatient rehab therapists can now utilize Remote Therapeutic Monitoring CPT codes. That's right—now you can get reimbursed for monitoring and engaging with patients outside of the clinic. So, what exactly does this mean?


- Providers who use a platform like Keet for patient engagement can now bill Medicare (and potentially commercial payers) for remotely managing patients within their digital health platform.
- This will create a new revenue stream for PT/OTs at a time when Medicare has cut their overall reimbursement by 3.7%
- A single, intuitive solution for patient engagement and outcomes is essential to maximize reimbursement in the transition to value-based care (VBC) by both helping providers to achieve a MIPS bonus and capturing new revenue for remote patient monitoring.


Remote Therapeutic Monitoring? Check.

A platform to help you capture this new revenue stream and transition to value-based care? Check, check.



 **Get reimbursed for remote therapeutic monitoring and treatment management.**

 **Grow your business with new revenue streams for PTs and OTs.**

 **Start delivering clinical-grade care, anywhere, with the Keet platform.**

New CPT codes for Remote Therapeutic Monitoring.

	CPT CODE	DESCRIPTION	RELATIVE VALUE UNITS
Initial Set-up and Patient Education	98975	Remote therapeutic monitoring (e.g., respiratory system status, musculoskeletal system status, therapy adherence, therapy response); initial set-up and patient education on use of equipment	Consult CMS for crosswalking instructions
Supply of Device for Monitoring Respiratory System	98976	Remote therapeutic monitoring (e.g., respiratory system status, musculoskeletal system status, therapy adherence, therapy response); device(s) supply with scheduled (e.g., daily) recording(s) and/or programmed alert(s) transmission to monitor respiratory system, each 30 days	Consult CMS for crosswalking instructions
Supply of Device for Monitoring Musculoskeletal System	98977	Remote therapeutic monitoring (e.g., respiratory system status, musculoskeletal system status, therapy adherence, therapy response); device(s) supply with scheduled (e.g., daily) recording(s) and/or programmed alert(s) transmission to monitor musculoskeletal system, each 30 days	Consult CMS for crosswalking instructions
Monitoring/Treatment Management Services, first 20 minutes	98980	Remote therapeutic monitoring treatment management services, physician/ other qualified health care professional time in a calendar month requiring at least one interactive communication with the patient/caregiver during the calendar month; first 20 minutes	0.62 RVU
Monitoring/Treatment Management Services, each additional 20 minutes	98981	Remote therapeutic monitoring treatment management services, physician/ other qualified health care professional time in a calendar month requiring at least one interactive communication with the patient/caregiver during the calendar month; each additional 20 minutes (List separately in addition to code for primary procedure)	0.61 RVU